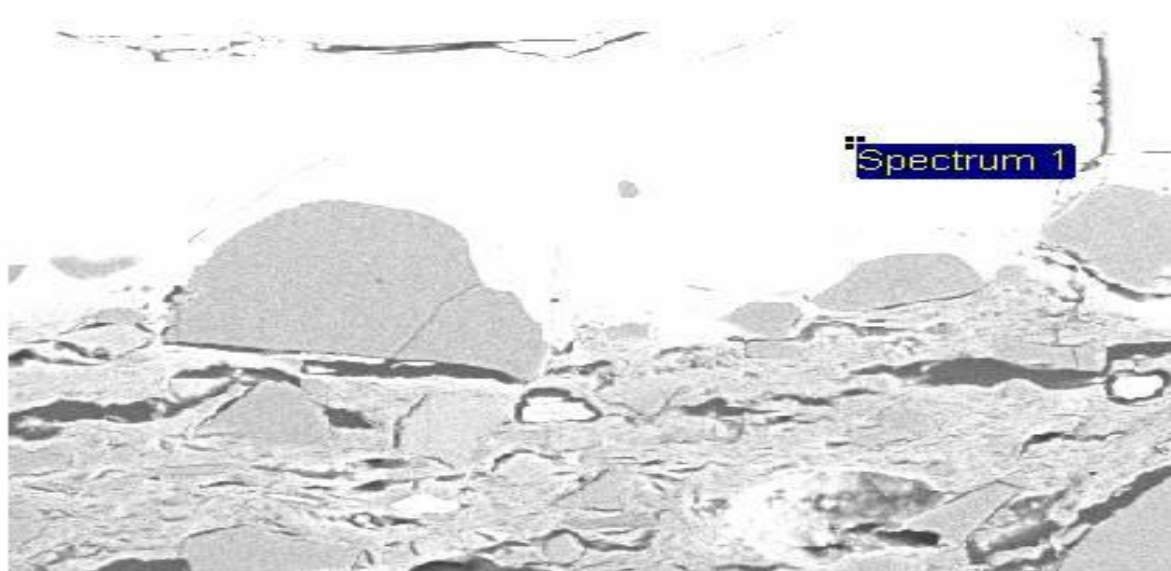


ED-XRF AG-8 Glaze

Readings in ppm (parts per million by weight)

Date	Reading	K	K +/-	Ca	Ca +/-	Ti	Ti +/-	Fe	
10-Jul-08			5205	400	2131	203	1016	132	10759
30-Jul-08	16		3077	339	1498	175	452	116	8517
30-Jul-08	17		2441	317	1173	163	773	113	8512

EDS- Thin Seciton Glaze



200µm

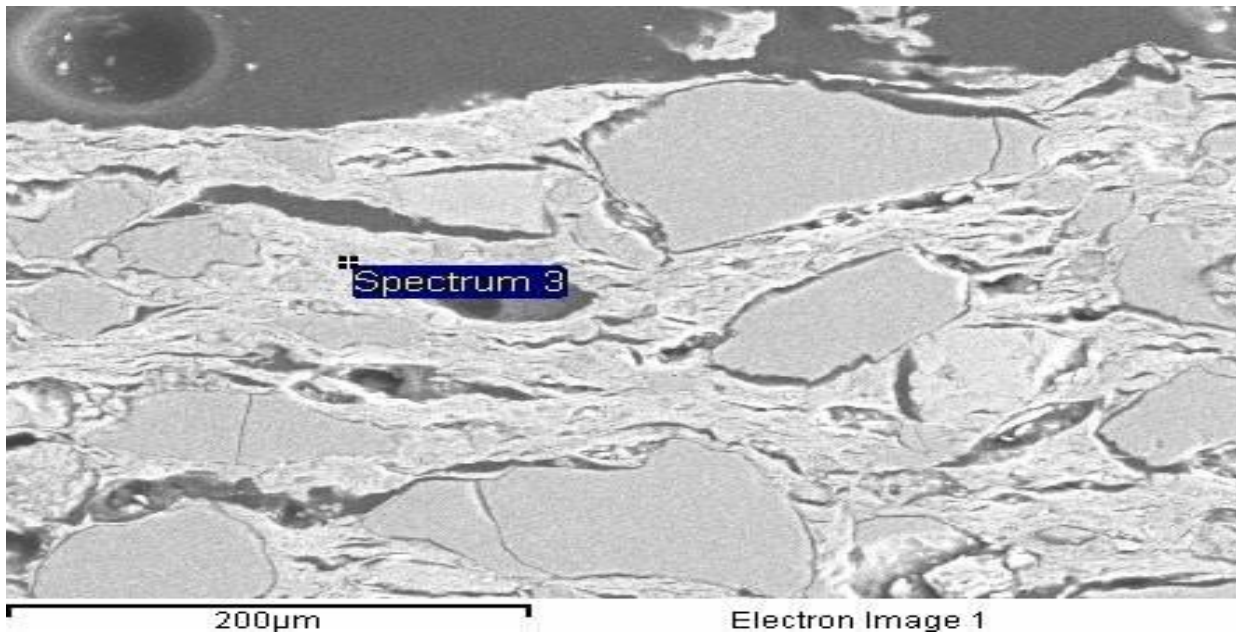
Electron Image 1

1-Aug	Element	Weight%	Atomic%
	O K	35.56	71.07
	Mg K	0.46	0.6
	Al K	2.66	3.16
	Si K	14.19	16.16
	K K	0.54	0.44
	Ca K	0.22	0.17
	Ti K	0.26	0.17
	Fe K	2.11	1.21
	Cu K	0.31	0.16
	Rh L	0.86	0.27
	Pb M	41.13	6.35
	Bi M	1.71	0.26
	Totals	100	

ED-XRF No Glaze

Date	Time	Reading	K	K +/-	Ca	Ca +/-	Ti	Ti +/-
10-Jul-08	14:08:25		36235	887	21329	526	5124	207
30-Jul-08	12:24:11	18	22095	627	15251	411	4171	181
30-Jul-08	12:26:30	19	21149	603	14654	398	4010	176

EDS - Thin Section No Glaze



1-Aug-08	Element	Weight%	Atomic%
	O K	56.43	71.26
	Mg K	1.79	1.49
	Al K	10.6	7.94
	Si K	21.13	15.2
	K K	2.33	1.2
	Ca K	0.57	0.29
	Ti K	0.5	0.21
	Fe K	6.65	2.41
	Totals	100	

Key

Readings taken from the same spot

Fe +/-	Cu	Cu +/-	Pb	Pb +/-
268	594	175	557102	29129
218	554	148	464857	22400
216	745	159	475661	23438



Fe	Fe +/-
47878	851
39658	708
38941	689

