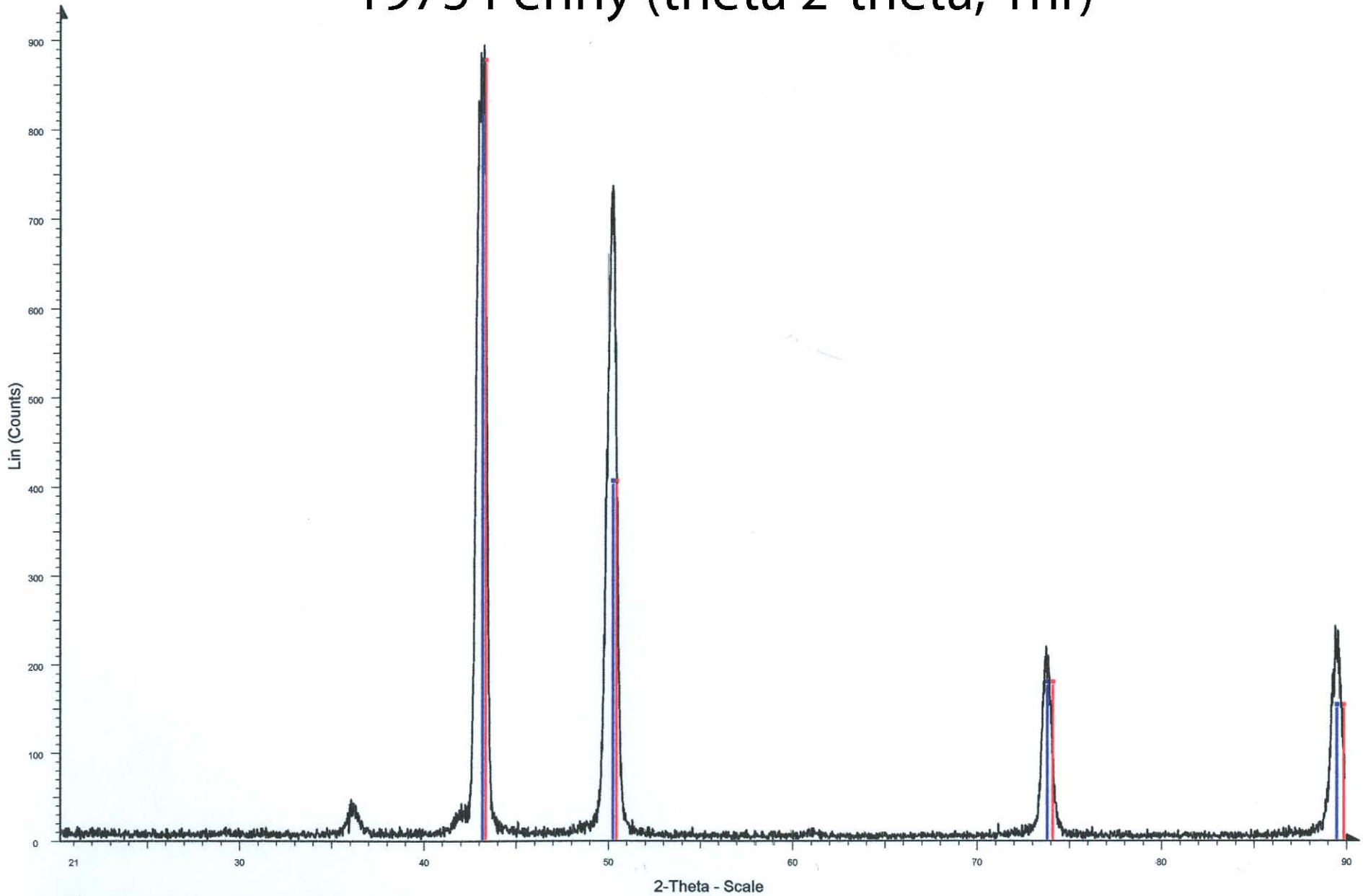


1975 Penny (theta 2-theta, 1hr)



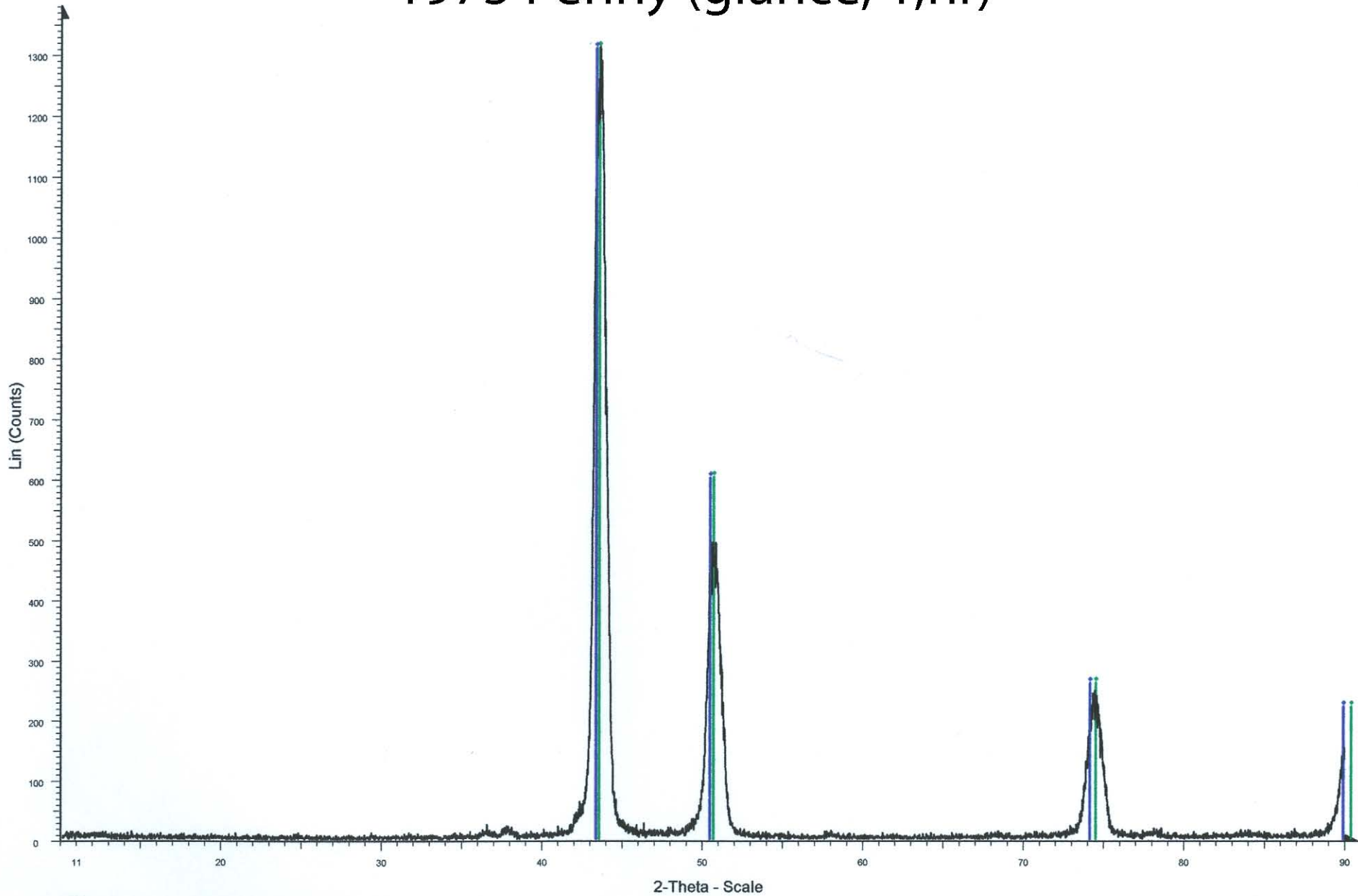
Penny 1975 theta 2 - File: Penny 1975 theta 2.RAW - Type: 2Th/Th locked - Start: 10.000 ° - End: 90.000 ° - Step: 0.020 ° - Step time: 1. s - Temp.: 25 °C (Room) - Time Started: 2 s - 2-Theta: 10.00

Operations: Import

04-0836 (*) - Copper, syn - Cu - Y: 97.75 % - d x by: 1. - WL: 1.54056

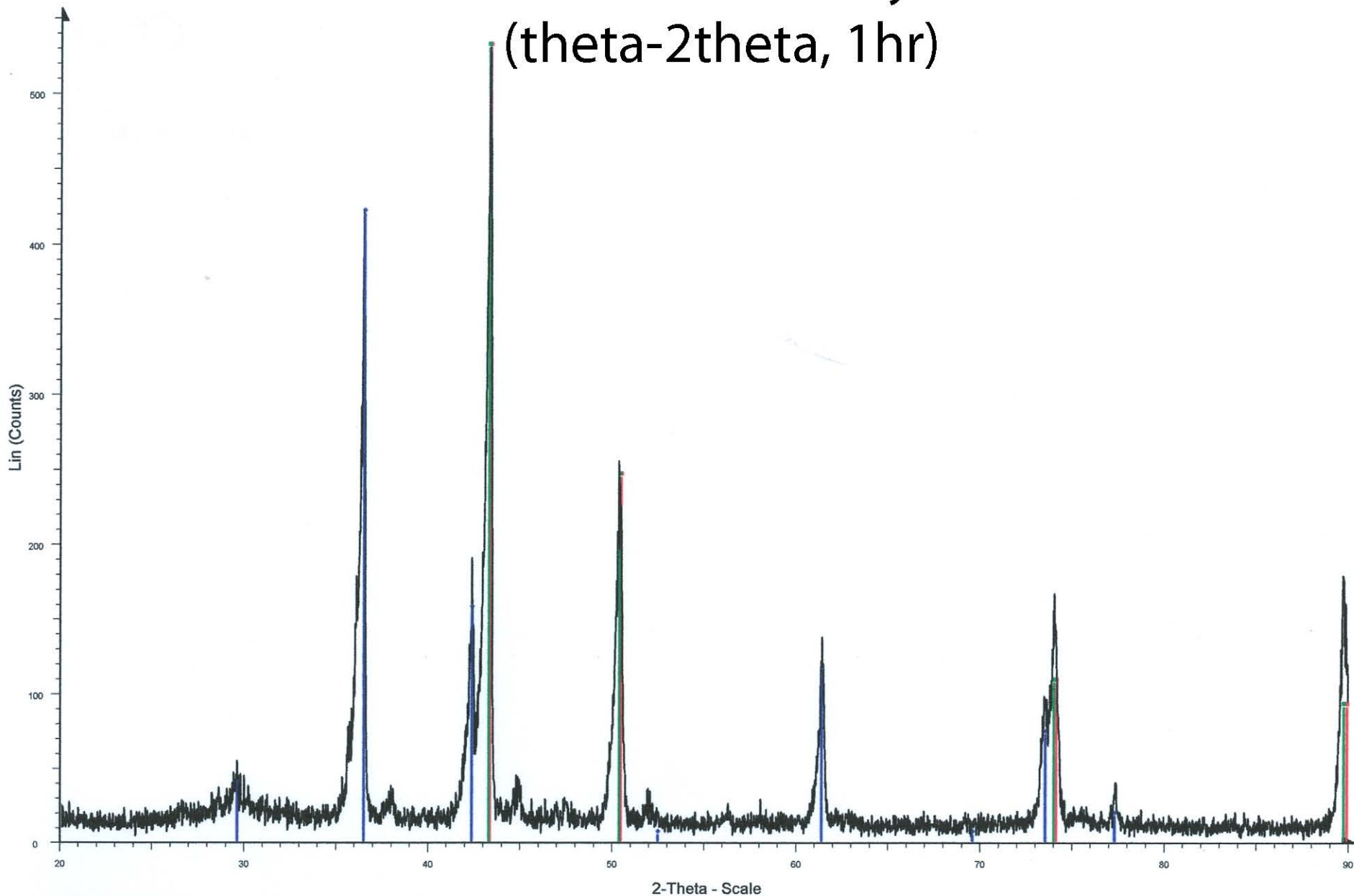
04-0836 (*) - Copper, syn - Cu - Y: 97.75 % - d x by: 1.0034 - WL: 1.54056

1975 Penny (glance, 1,hr)



1975 Penny (obverse) Glance - File: Penny 1975 Glance (1 hr).RAW - Type: 2Th alone - Start: 10.000 ° - End: 90.000 ° - Step: 0.020 ° - Step time: 1. s - Temp.: 25 °C (Room) - Time Started: 2 s - 2-
Operations: Import
04-0836 (*) - Copper, syn - Cu - Y: 99.82 % - d x by: 1. - WL: 1.54056
04-0836 (*) - Copper, syn - Cu - Y: 99.95 % - d x by: 0.9958 - WL: 1.54056

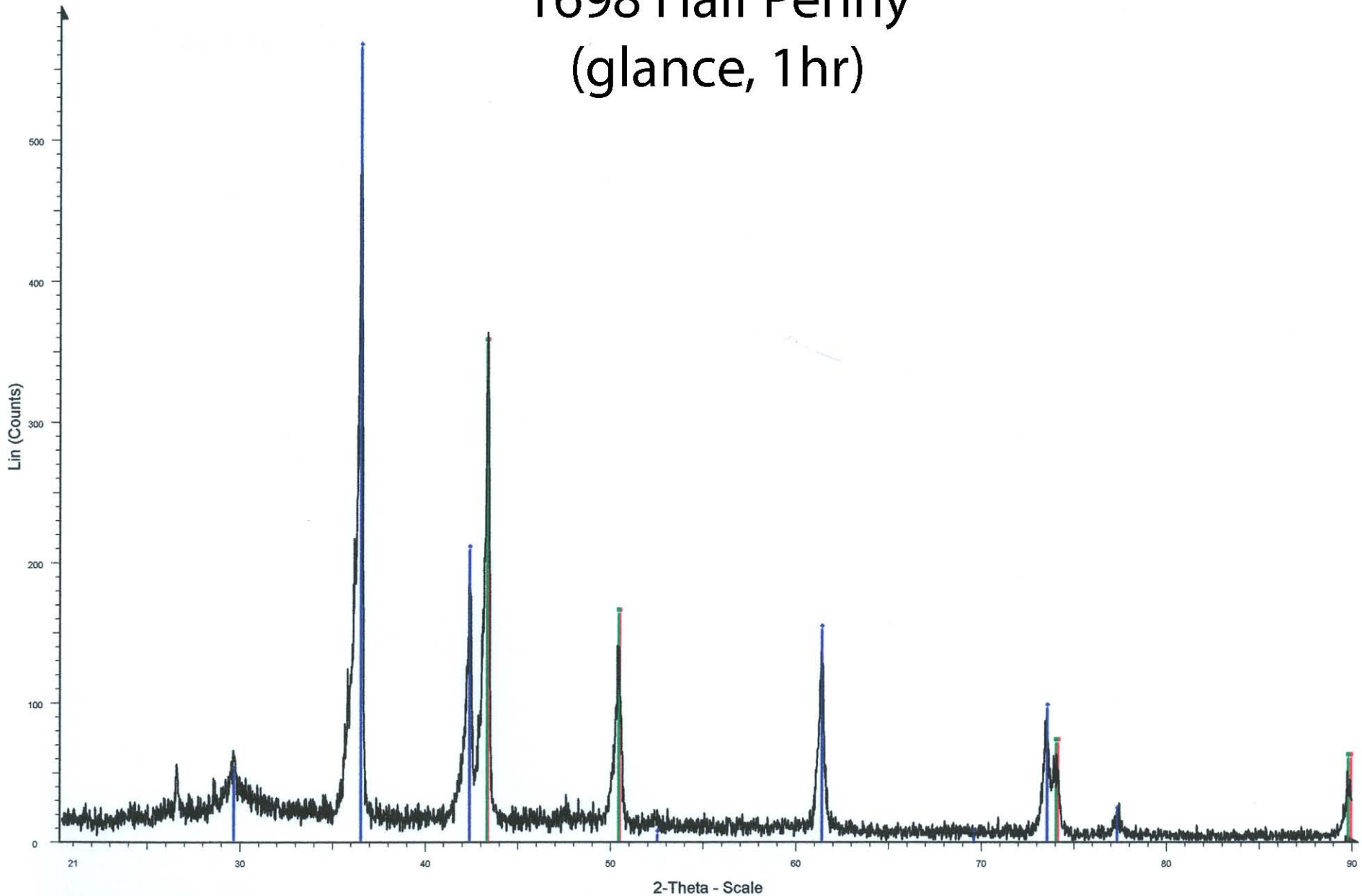
1698 Half Penny (theta-2theta, 1 hr)



GFAP Half Penny 2 - File: GFAP Half Penny 2.RAW - Type: 2Th/Th locked - Start: 20.000 ° - End: 90.000 ° - Step: 0.020 ° - Step time: 1. s - Temp.: 25 °C (Room) - Time Started: 2 s - 2-Theta: 20.00
Operations: Import

- 04-0836 (*) - Copper, syn - Cu - Y: 100.00 % - d x by: 1. - WL: 1.54056
- 05-0667 (*) - Cuprite, syn - Cu₂O - Y: 79.17 % - d x by: 1. - WL: 1.54056
- 04-0836 (*) - Copper, syn - Cu - Y: 100.00 % - d x by: 1.0014 - WL: 1.54056

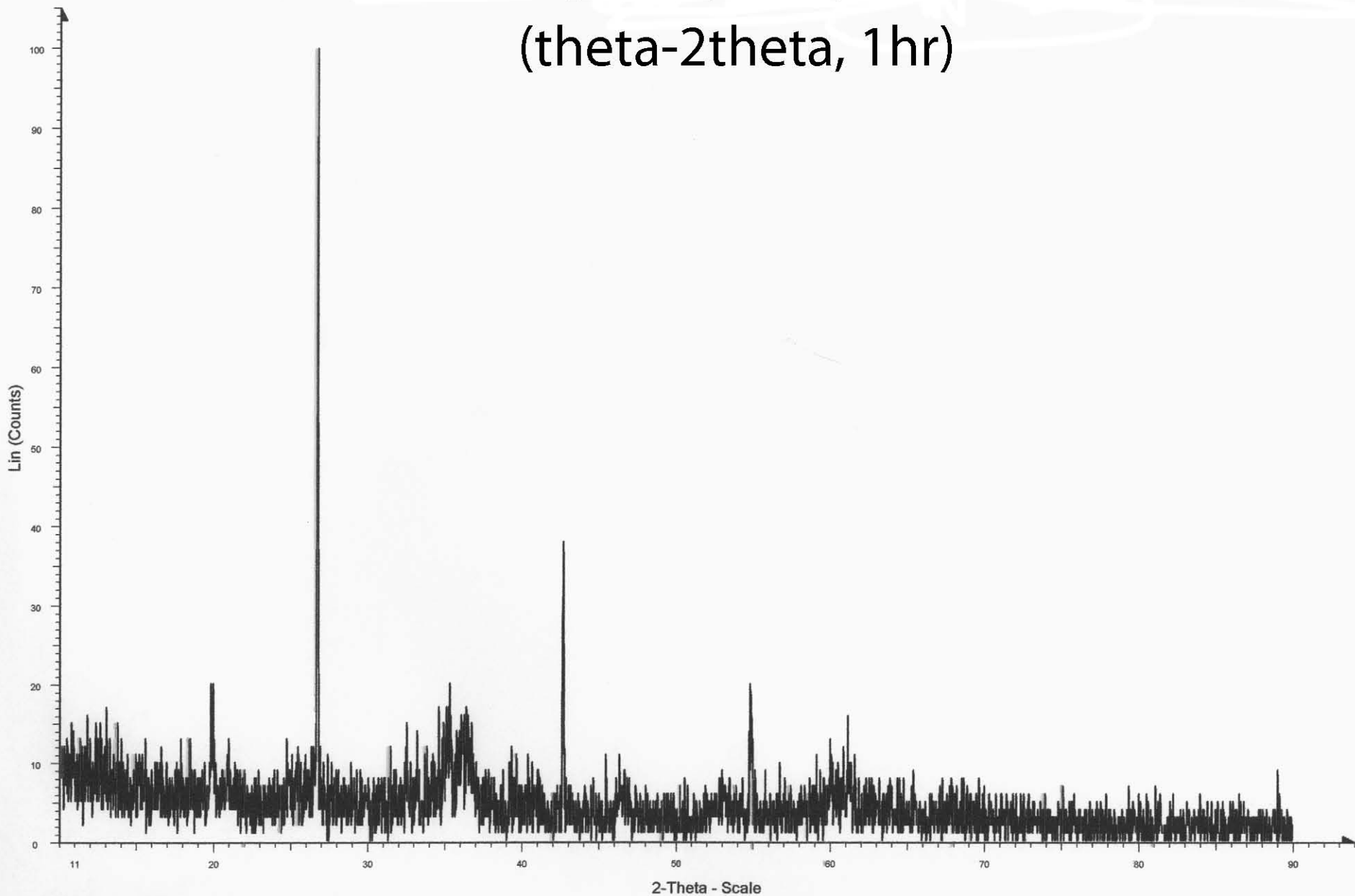
1698 Half Penny (glance, 1 hr)



Coin 1698 Half Penny - File: UTRA 2008Coin 1698 Half Penny.RAW - Type: 2Th alone - Start: 10.000 ° - End: 90.000 ° - Step: 0.020 ° - Step time: 1. s - Temp.: 25 °C (Room) - Time Started: 2 s - 2-Operations: Import

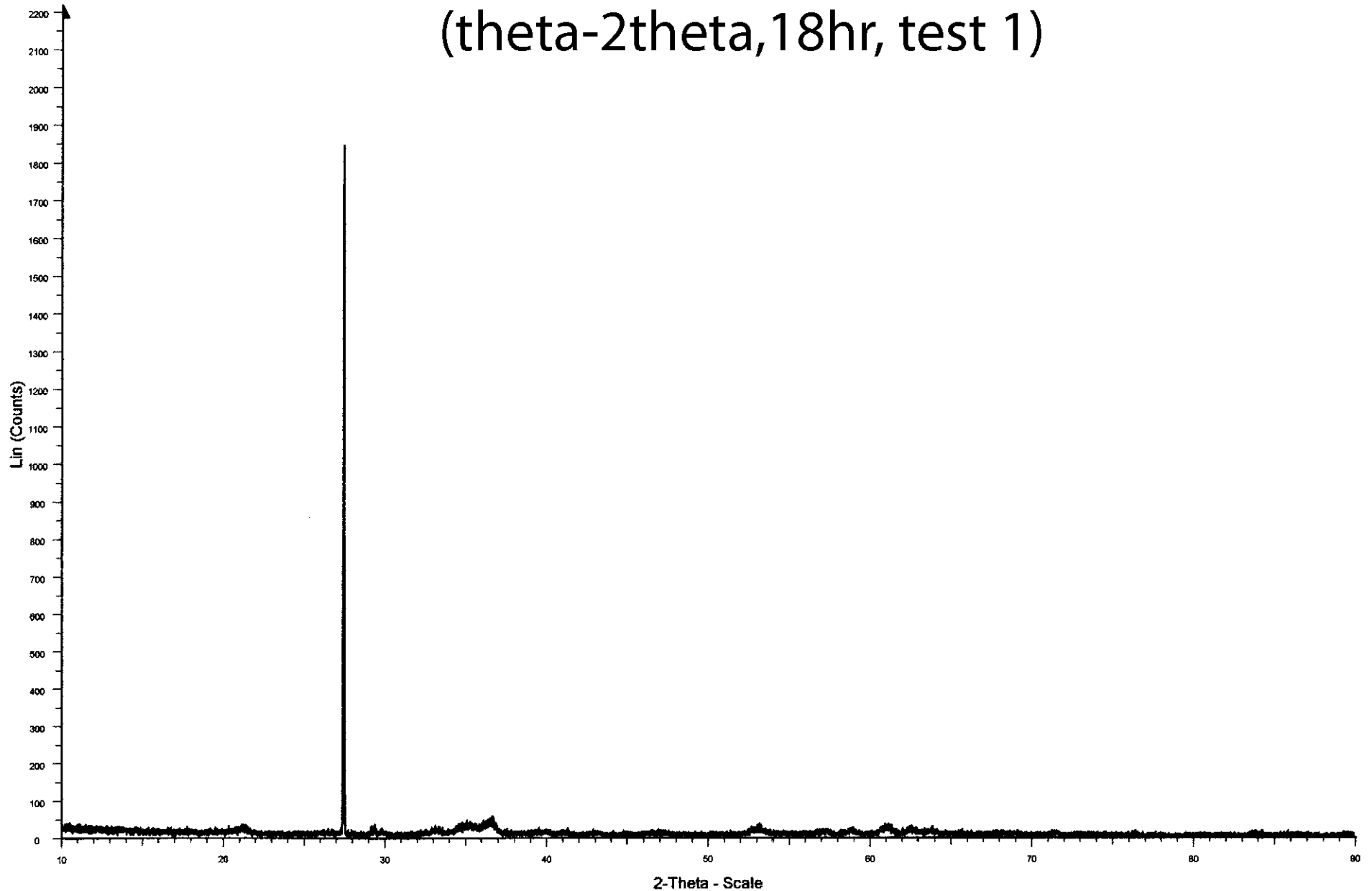
- 04-0836 (*) - Copper, syn - Cu - Y: 63.00 % - d x by: 1. - WL: 1.54056
- 05-0667 (*) - Cuprite, syn - Cu₂O - Y: 100.00 % - d x by: 1. - WL: 1.54056
- 04-0836 (*) - Copper, syn - Cu - Y: 63.00 % - d x by: 1.0012 - WL: 1.54056

GFAP Unknown (theta-2theta, 1hr)



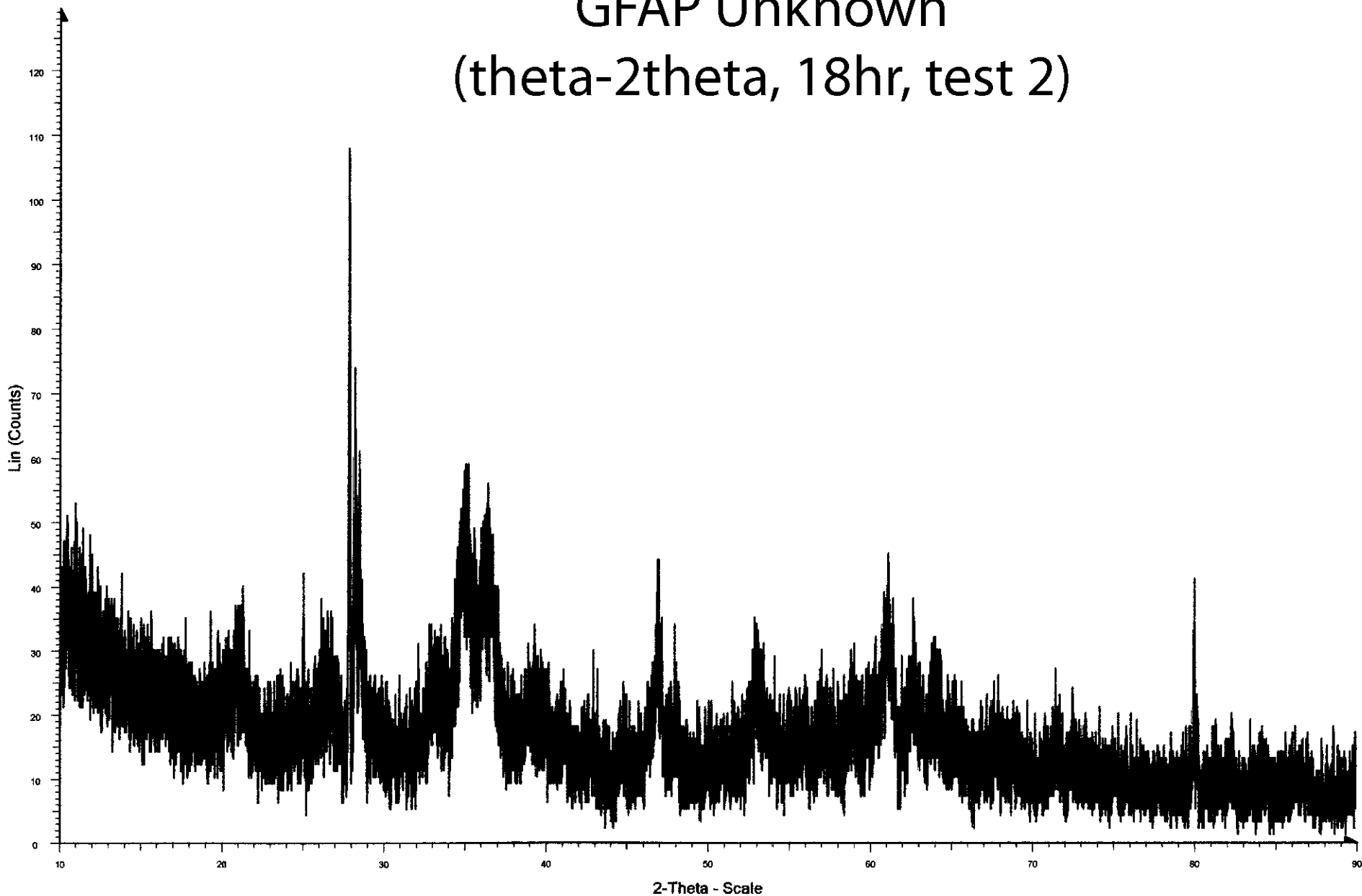
GFAP Unknown (theta-2theta, short) - File: GFAP Unknown (theta-2theta, short).RAW - Type: 2Th/Th locked - Start: 10.000 ° - End: 90.000 ° - Step: 0.020 ° - Step time: 1. s - Temp.: 25 °C (Room) - Operations: Import

GFAP Unknown (theta-2theta, 18hr, test 1)



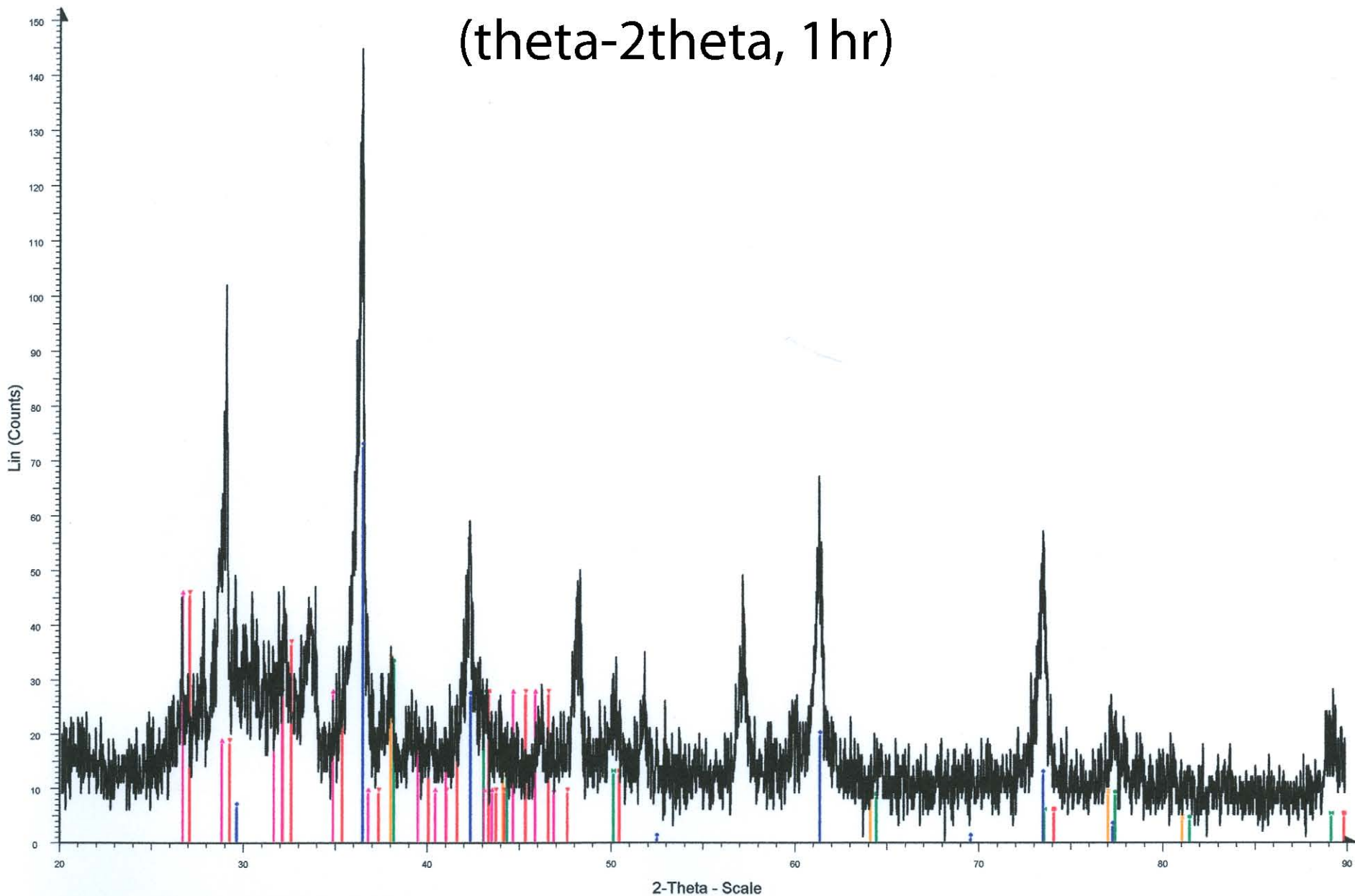
GFAP Unknown 2 - File: GFAP Unknown (18hr, test 1).RAW - Type: 2Th/Th locked - Start: 10.000 ° - End: 90.004 ° - Step: 0.006 ° - Step time: 4. s - Temp.: 25 °C (Room) - Time Started: 2 s - 2-The
Operations: Import

GFAP Unknown (theta-2theta, 18hr, test 2)



GFAP Unknown Overnight 2 - File: GFAP Unknown Overnight 2.RAW - Type: 2Th/Th locked - Start: 10.000 ° - End: 90.004 ° - Step: 0.006 ° - Step time: 4. s - Temp.: 25 °C (Room) - Time Started: 2
Operations: Import

Maxentius Rome (theta-2theta, 1hr)

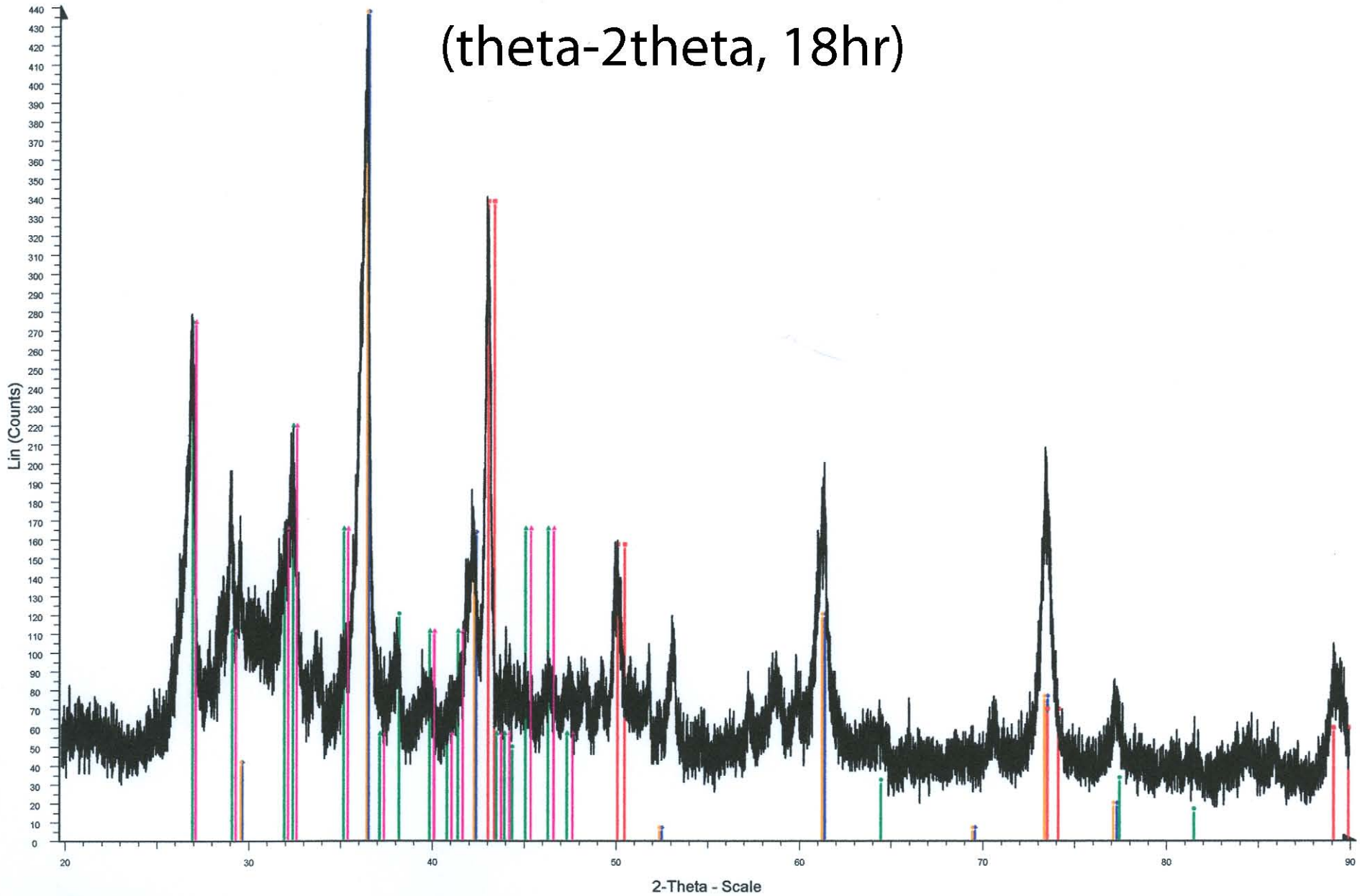


Maxentius Rome Theta 2 - File: Maxentius (Rome) Theta-2Theta.RAW - Type: 2Th/Th locked - 11-0233 (D) - Lead Tin Oxide - Pb₂SnO₄ - Y: 31.25 % - d x by: 1.0146 - WL: 1.54056

Operations: Import

- 04-0836 (*) - Copper, syn - Cu - Y: 18.75 % - d x by: 1. - WL: 1.54056
- 05-0667 (*) - Cuprite, syn - Cu₂O - Y: 50.00 % - d x by: 1. - WL: 1.54056
- 04-0783 (I) - Silver-3C, syn - Ag - Y: 22.57 % - d x by: 1. - WL: 1.54056
- 04-0836 (*) - Copper, syn - Cu - Y: 18.75 % - d x by: 1.0062 - WL: 1.54056
- 04-0783 (I) - Silver-3C, syn - Ag - Y: 23.00 % - d x by: 1.0042 - WL: 1.54056
- 11-0233 (D) - Lead Tin Oxide - Pb₂SnO₄ - Y: 31.25 % - d x by: 1. - WL: 1.54056

Maxentius Rome (theta-2theta, 18hr)

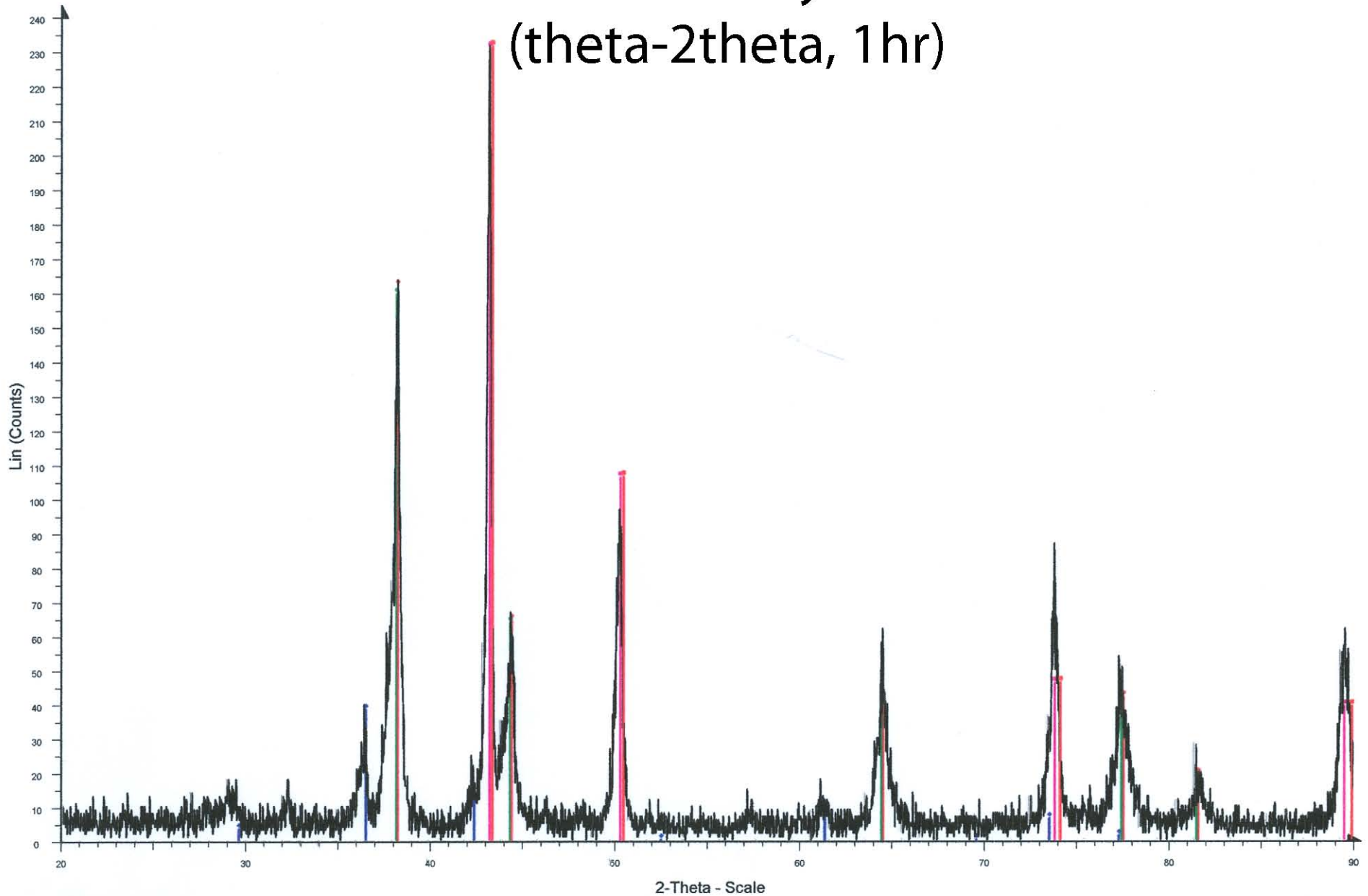


Maxentius (Rome) Overnight (T-2T) - File: Maxentius (Rome) Overnight (T-2T).RAW - Type: 2T 11-0233 (D) - Lead Tin Oxide - Pb2SnO4 - Y: 62.50 % - d x by: 1.0062 - WL: 1.54056

Operations: Import

- 04-0836 (*) - Copper, syn - Cu - Y: 77.08 % - d x by: 1. - WL: 1.54056
- 05-0667 (*) - Cuprite, syn - Cu2O - Y: 100.00 % - d x by: 1. - WL: 1.54056
- 04-0783 (I) - Silver-3C, syn - Ag - Y: 27.08 % - d x by: 1. - WL: 1.54056
- 04-0836 (*) - Copper, syn - Cu - Y: 77.08 % - d x by: 1.0071 - WL: 1.54056
- 05-0667 (*) - Cuprite, syn - Cu2O - Y: 100.00 % - d x by: 1.0021 - WL: 1.54056
- 11-0233 (D) - Lead Tin Oxide - Pb2SnO4 - Y: 62.50 % - d x by: 1. - WL: 1.54056

Diocletian Cyzicus (theta-2theta, 1 hr)

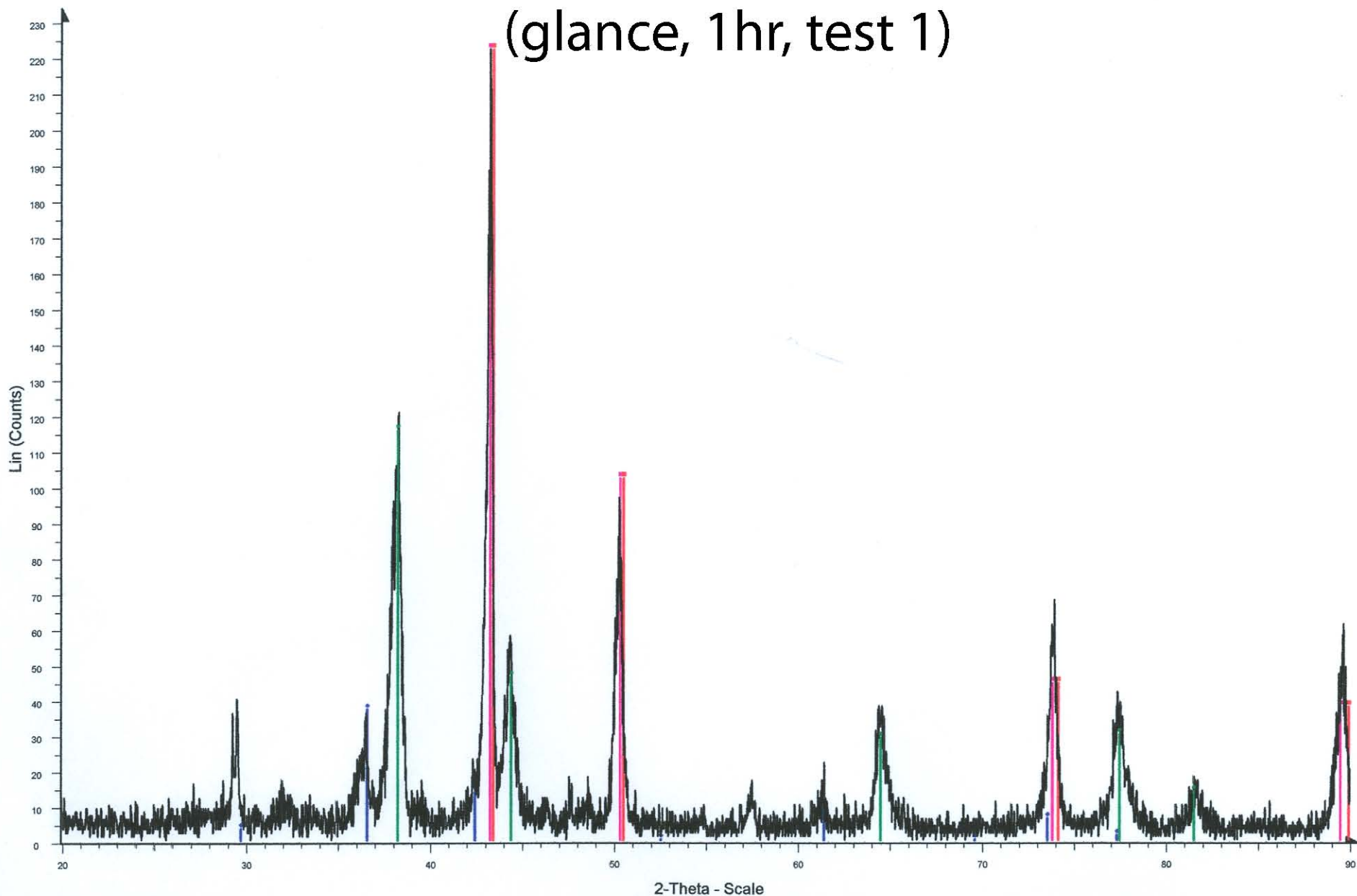


diocletian cyzicus obverse 20-90 - File: diocletian cyzicus obverse 20-90.RAW - Type: 2Th/Th locked - Start: 20.000 ° - End: 90.000 ° - Step: 0.020 ° - Step time: 1. s - Temp.: 25 °C (Room) - Time St

Operations: Import

- 04-0836 (*) - Copper, syn - Cu - Y: 100.00 % - d x by: 1. - WL: 1.54056
- 05-0667 (*) - Cuprite, syn - Cu₂O - Y: 16.67 % - d x by: 1. - WL: 1.54056
- 04-0783 (I) - Silver-3C, syn - Ag - Y: 69.00 % - d x by: 1. - WL: 1.54056
- 04-0836 (*) - Copper, syn - Cu - Y: 99.83 % - d x by: 1.0034 - WL: 1.54056
- 04-0783 (I) - Silver-3C, syn - Ag - Y: 70.00 % - d x by: 0.9989 - WL: 1.54056

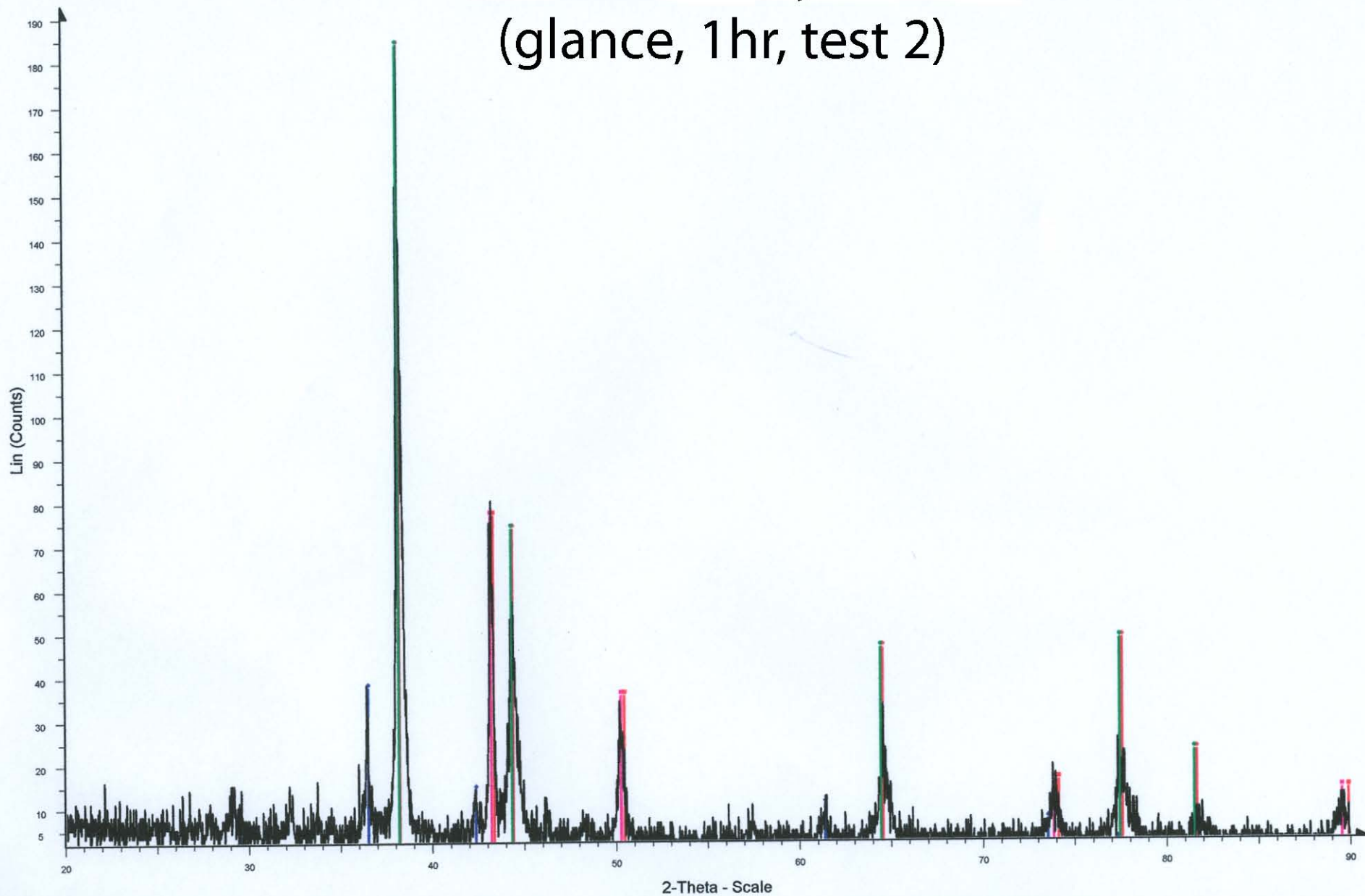
Diocletian Cyzicus (glance, 1hr, test 1)



Coin Diocletian Cyzicus - File: UTRA 2008Coin Diocletian Cyzicus.RAW - Type: 2Th alone - Start: 10.000 ° - End: 90.000 ° - Step: 0.020 ° - Step time: 1. s - Temp.: 25 °C (Room) - Time Started: 2 s - Operations: Import

- 04-0836 (*) - Copper, syn - Cu - Y: 100.00 % - d x by: 1. - WL: 1.54056
- 05-0667 (*) - Cuprite, syn - Cu₂O - Y: 16.67 % - d x by: 1. - WL: 1.54056
- 04-0783 (I) - Silver-3C, syn - Ag - Y: 52.08 % - d x by: 1. - WL: 1.54056
- 04-0836 (*) - Copper, syn - Cu - Y: 100.00 % - d x by: 1.0038 - WL: 1.54056

Diocletian Cyzicus (glance, 1 hr, test 2)

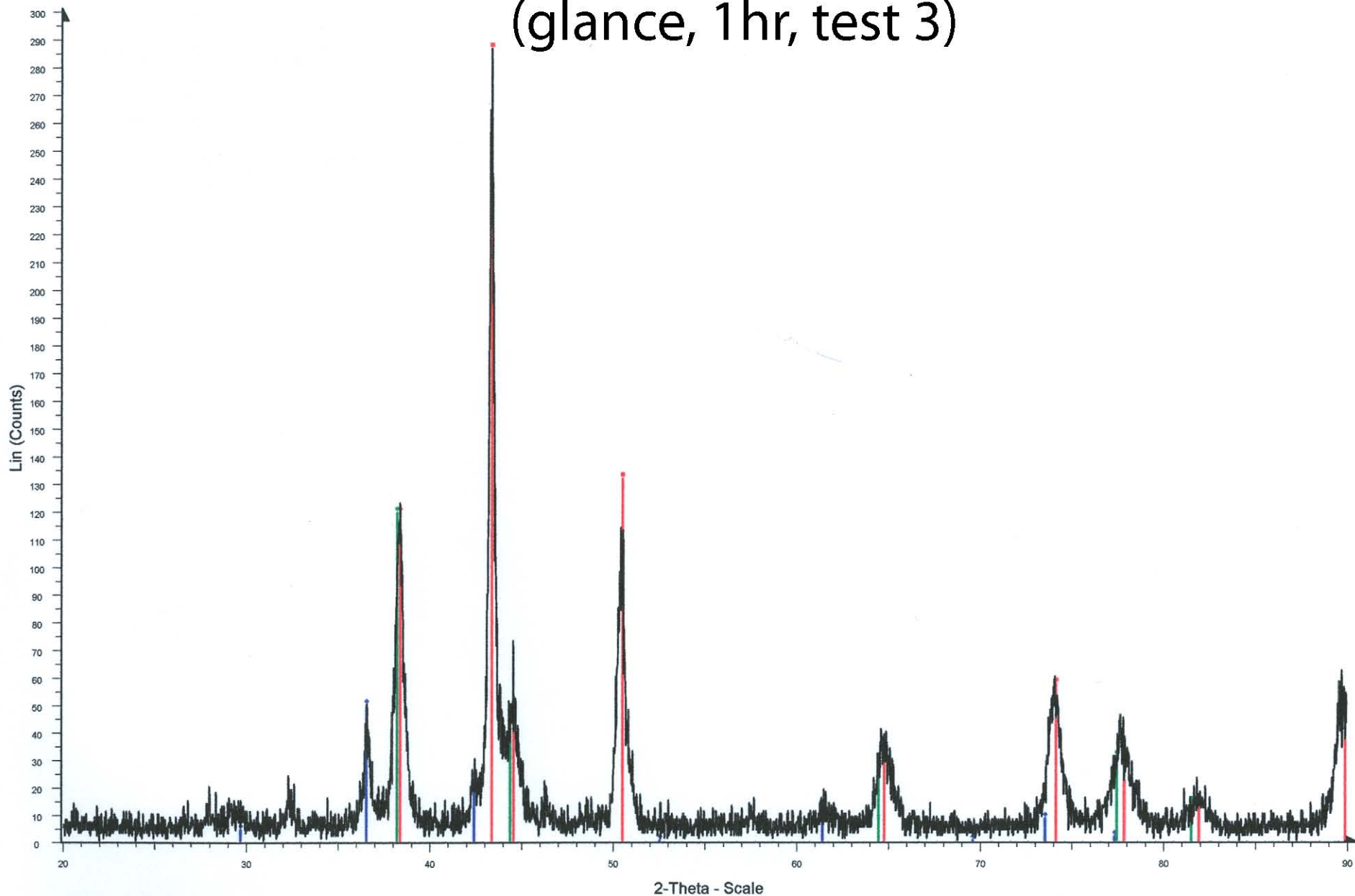


Diocletian Cyzicus 2 - File: Diocletian Cyzicus 2 (glance).RAW - Type: 2Th alone - Start: 20.000 ° - End: 90.000 ° - Step: 0.020 ° - Step time: 1. s - Temp.: 25 °C (Room) - Time Started: 2 s - 2-Theta:

Operations: Import

- 04-0836 (*) - Copper, syn - Cu - Y: 41.67 % - d x by: 1. - WL: 1.54056
- 05-0667 (*) - Cuprite, syn - Cu₂O - Y: 20.31 % - d x by: 1. - WL: 1.54056
- 04-0783 (I) - Silver-3C, syn - Ag - Y: 100.00 % - d x by: 1. - WL: 1.54056
- 04-0836 (*) - Copper, syn - Cu - Y: 41.67 % - d x by: 1.0032 - WL: 1.54056
- 04-0783 (I) - Silver-3C, syn - Ag - Y: 100.00 % - d x by: 0.9986 - WL: 1.54056

Diocletian Cyzicus (glance, 1hr, test 3)



diocletian cyzicus glance - File: diocletian cyzicus glance 2.RAW - Type: 2Th alone - Start: 10.000 ° - End: 90.000 ° - Step: 0.020 ° - Step time: 1. s - Temp.: 25 °C (Room) - Time Started: 2 s - 2-Thet
Operations: Import

- 04-0836 (*) - Copper, syn - Cu - Y: 100.00 % - d x by: 1. - WL: 1.54056
- 05-0667 (*) - Cuprite, syn - Cu₂O - Y: 17.36 % - d x by: 1. - WL: 1.54056
- 04-0783 (I) - Silver-3C, syn - Ag - Y: 41.67 % - d x by: 1. - WL: 1.54056
- 04-0783 (I) - Silver-3C, syn - Ag - Y: 41.67 % - d x by: 0.9958 - WL: 1.54056